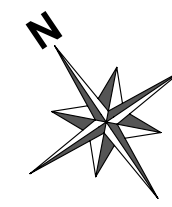
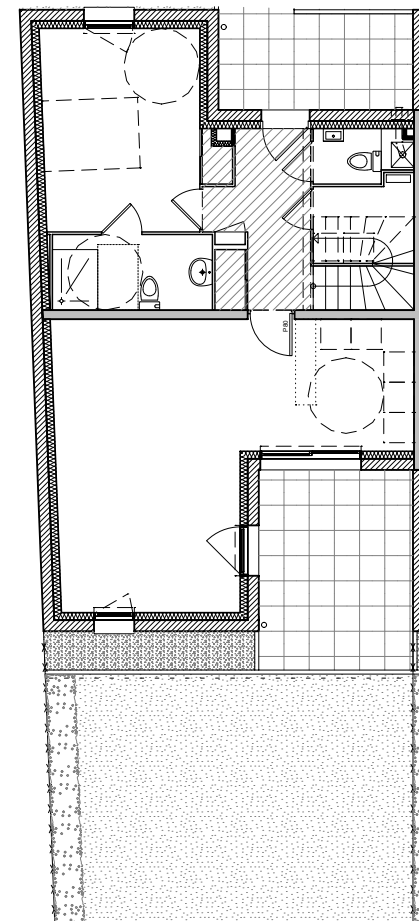
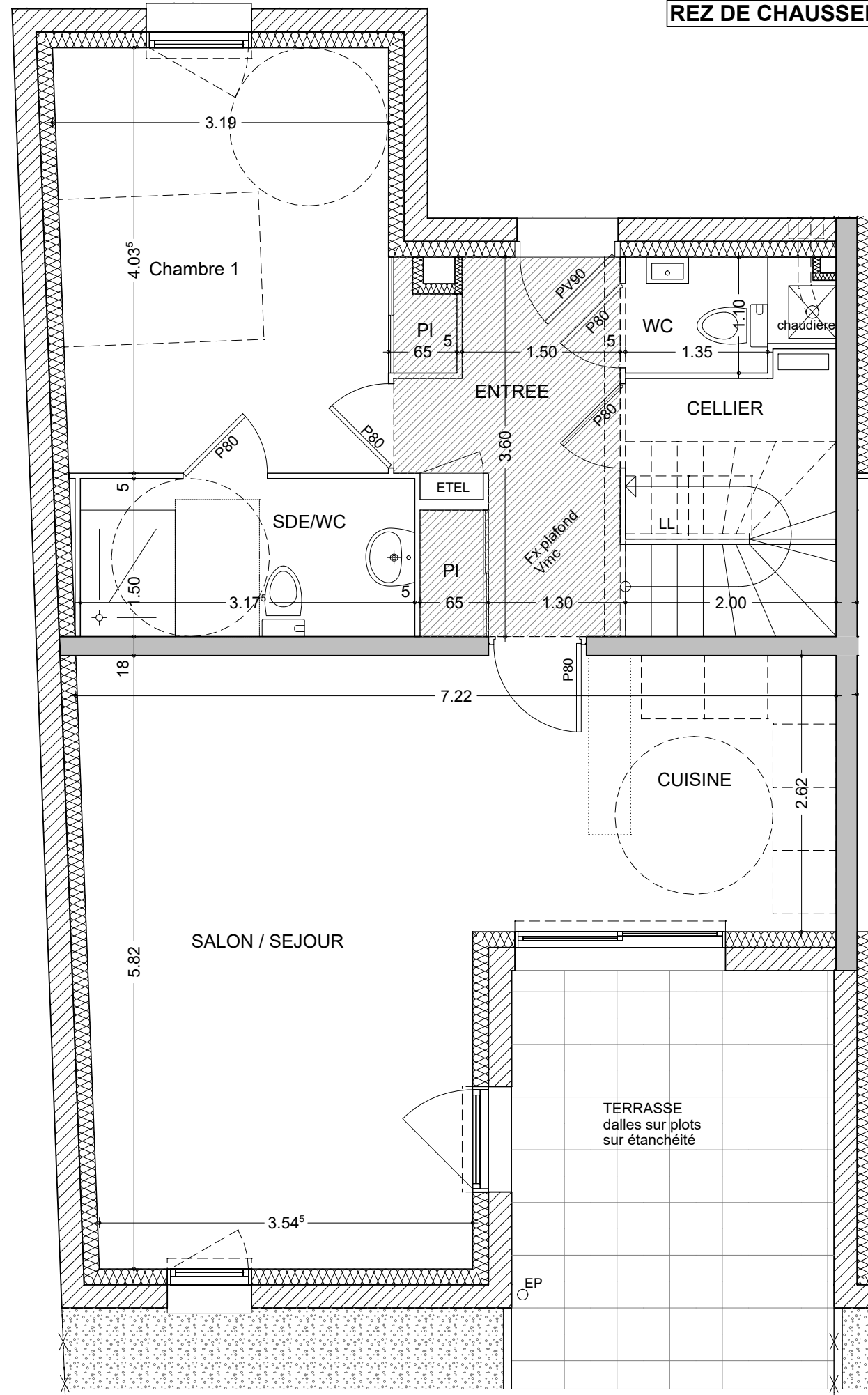


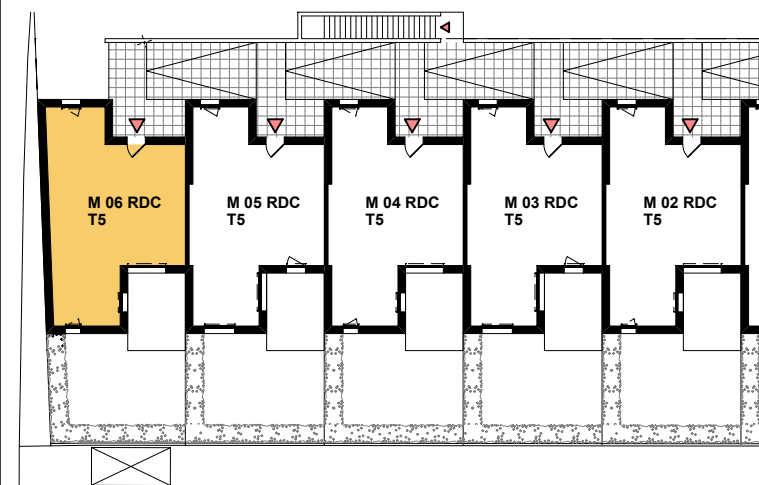
REZ DE CHAUSSEE



LE 108



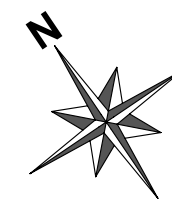
| MAISON M06 T5 | Surfaces en m ² |
|--------------------------|----------------------------|
| Entrée + PI | 6.32 |
| Salon / Séjour / Cuisine | 30.32 |
| Cellier | 2.65 |
| Chambre 1 + PI | 13.07 |
| SDE / WC | 4.76 |
| WC | 1.49 |
| HABITABLE RDC | 58.61 m² |
| Chambre 2 + PI | 9.61 |
| Chambre 3 + PI | 11.37 |
| Chambre 4 + PI | 10.42 |
| Dégt | 3.37 |
| SDB | 4.93 |
| WC | 1.24 |
| HABITABLE ETAGE | 40.94 m² |
| TOTAL HABITABLE | 99.55 m² |
| Jardin | 39.45 |
| Terrasse | 12.15 |



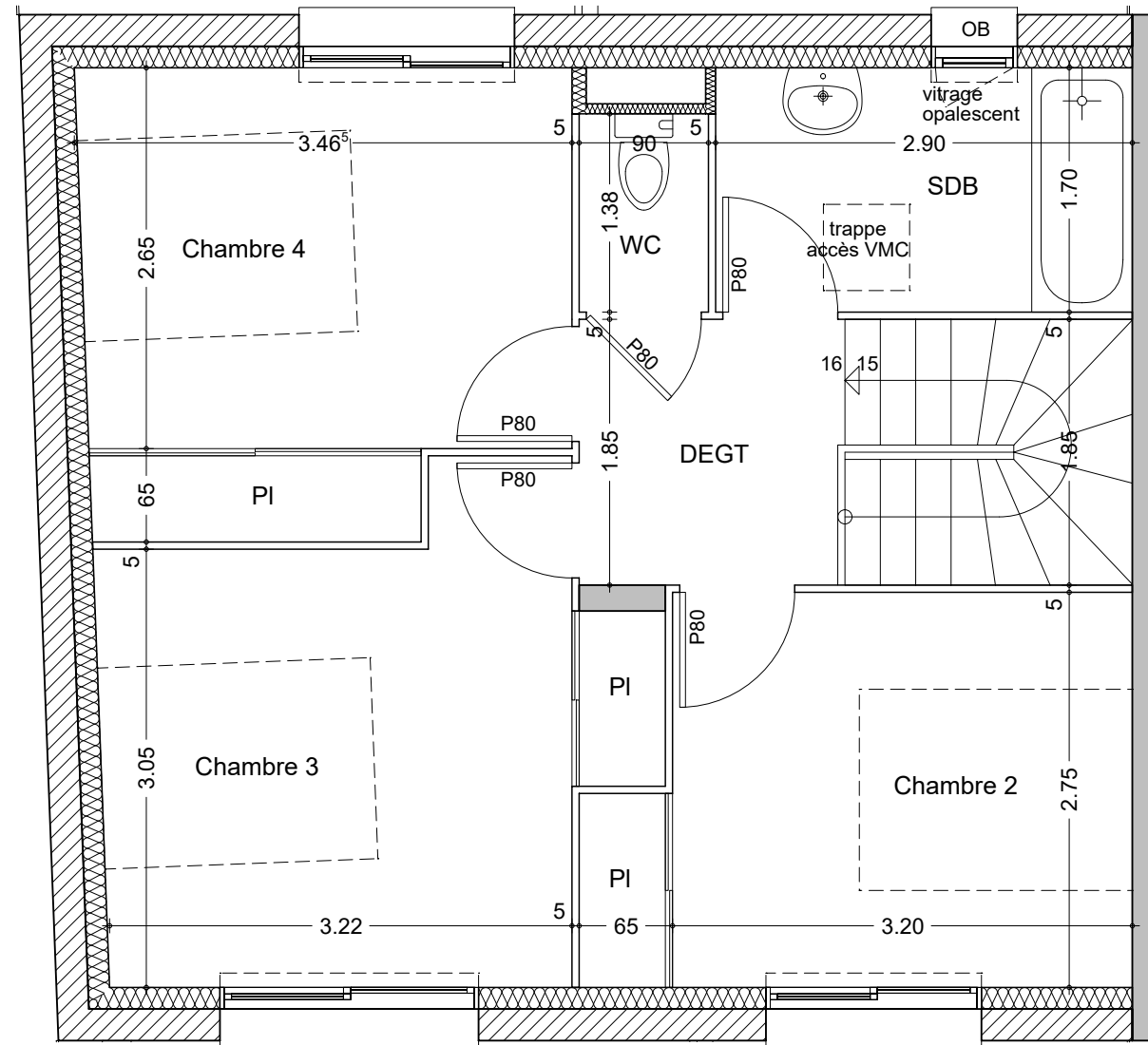
Ech : 1/50 ème

NOTA : Les surfaces annoncées peuvent subir des variations en fonctions d'impératifs techniques

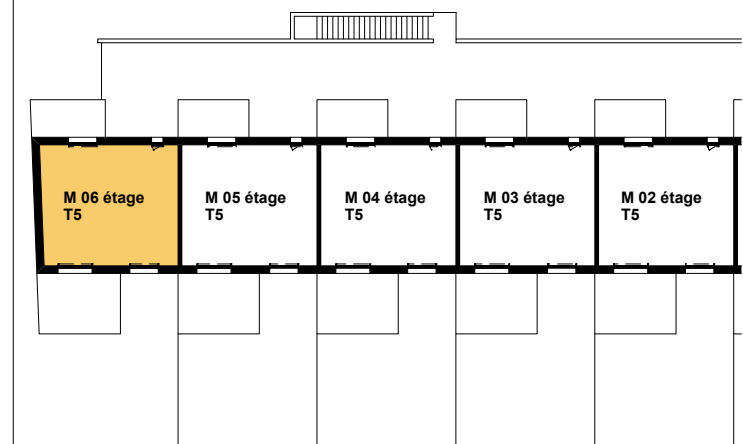
ETAGE



LE 108



| MAISON M06 T5 | Surfaces en m ² |
|--------------------------|----------------------------|
| Entrée + PI | 6.32 |
| Salon / Séjour / Cuisine | 30.32 |
| Cellier | 2.65 |
| Chambre 1 + PI | 13.07 |
| SDE / WC | 4.76 |
| WC | 1.49 |
| HABITABLE RDC | 58.61 m² |
| Chambre 2 + PI | 9.61 |
| Chambre 3 + PI | 11.37 |
| Chambre 4 + PI | 10.42 |
| Dégt | 3.37 |
| SDB | 4.93 |
| WC | 1.24 |
| HABITABLE ETAGE | 40.94 m² |
| TOTAL HABITABLE | 99.55 m² |
| Jardin | 39.45 |
| Terrasse | 12.15 |



Ech : 1/50 ème

NOTA : Les surfaces annoncées peuvent subir des variations en fonctions d'impératifs techniques